

5. The device is on. Screw it back together.

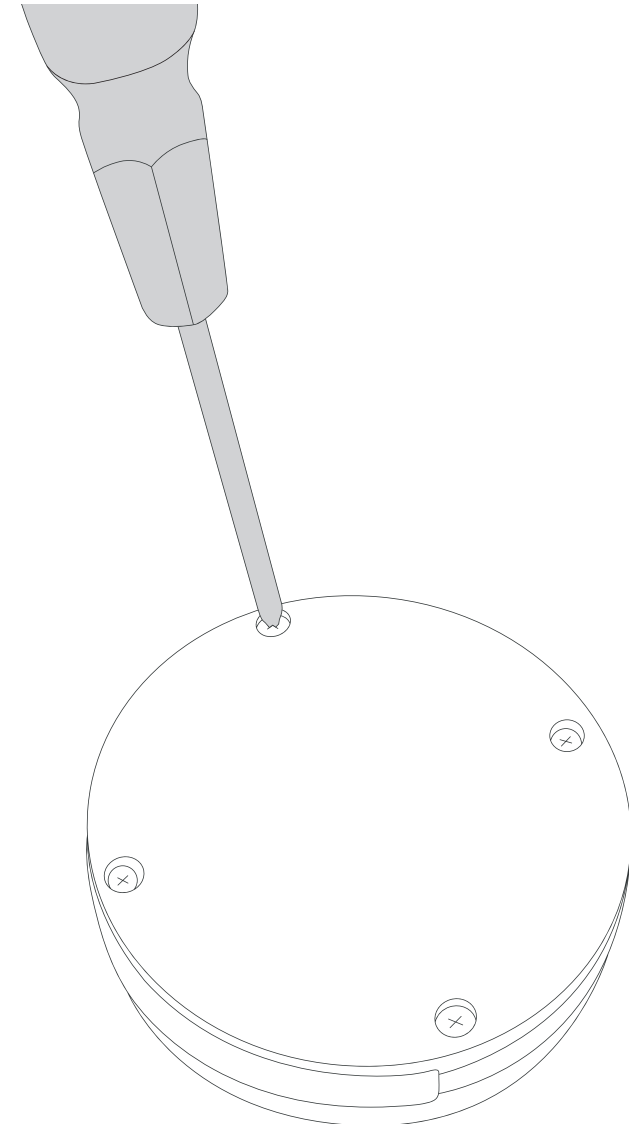


360.

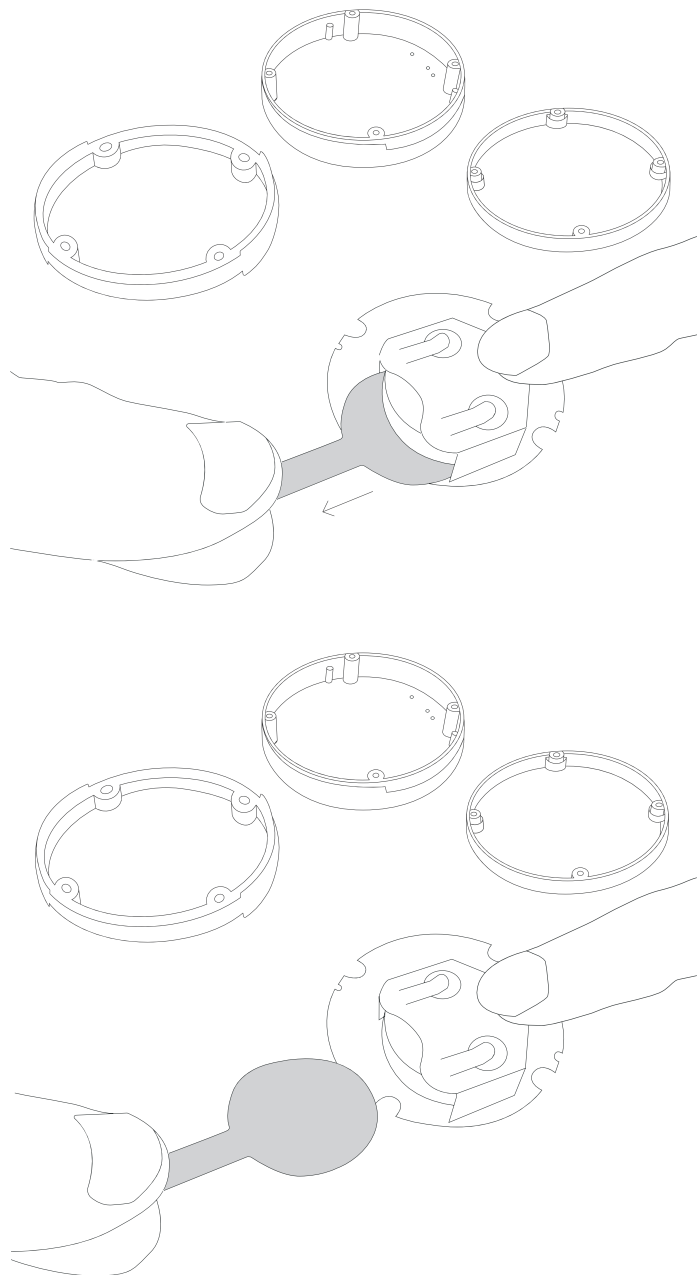
Quick Installation Guide

LoRa Alliance Member

1. Unscrew the device: remove 4 screws from the enclosure.

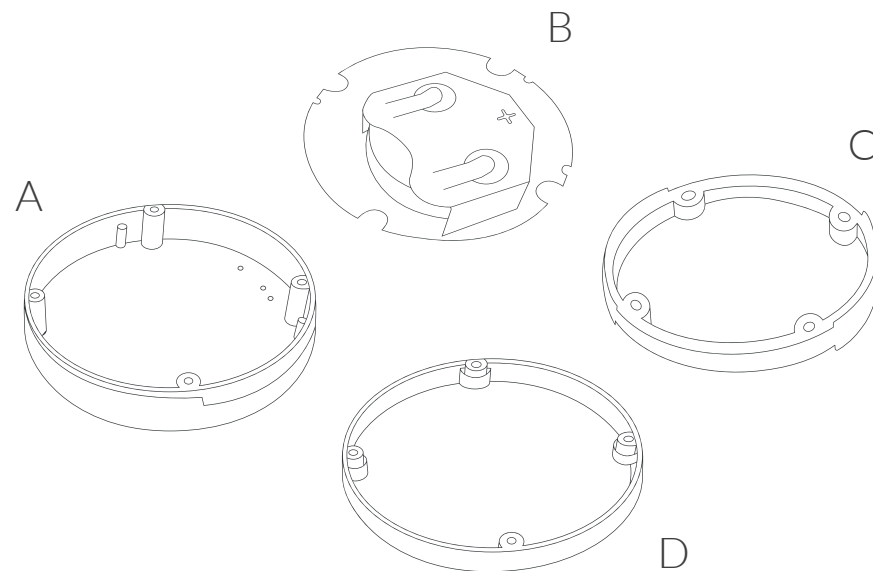


2. Hold the battery and pull out the green leaf.



3. Assemble the device. The order of the elements is important:

- Place the PCB (B) at the top of the enclosure (A)
- Then insert the seal (C)
- Fit the bottom part of the enclosure (D)



4. Match the PCB (marked components) to the enclosure according to the diagram. Place the PCB in the enclosure with the battery basket facing up.

