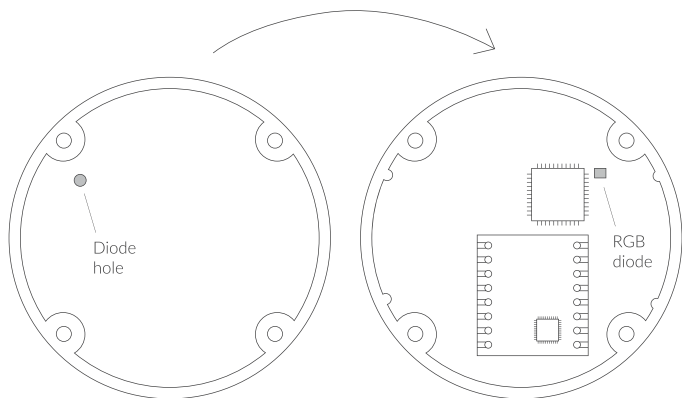


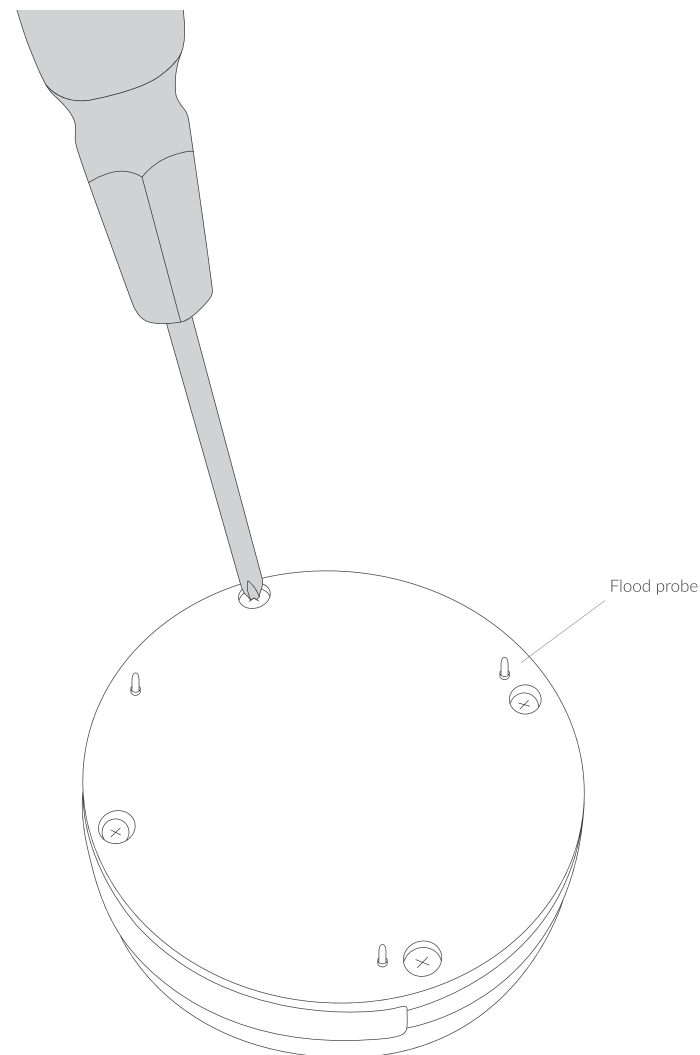
**Tip 2:** Match the PCB (marked component) to the top enclosure to the according to the diagram:



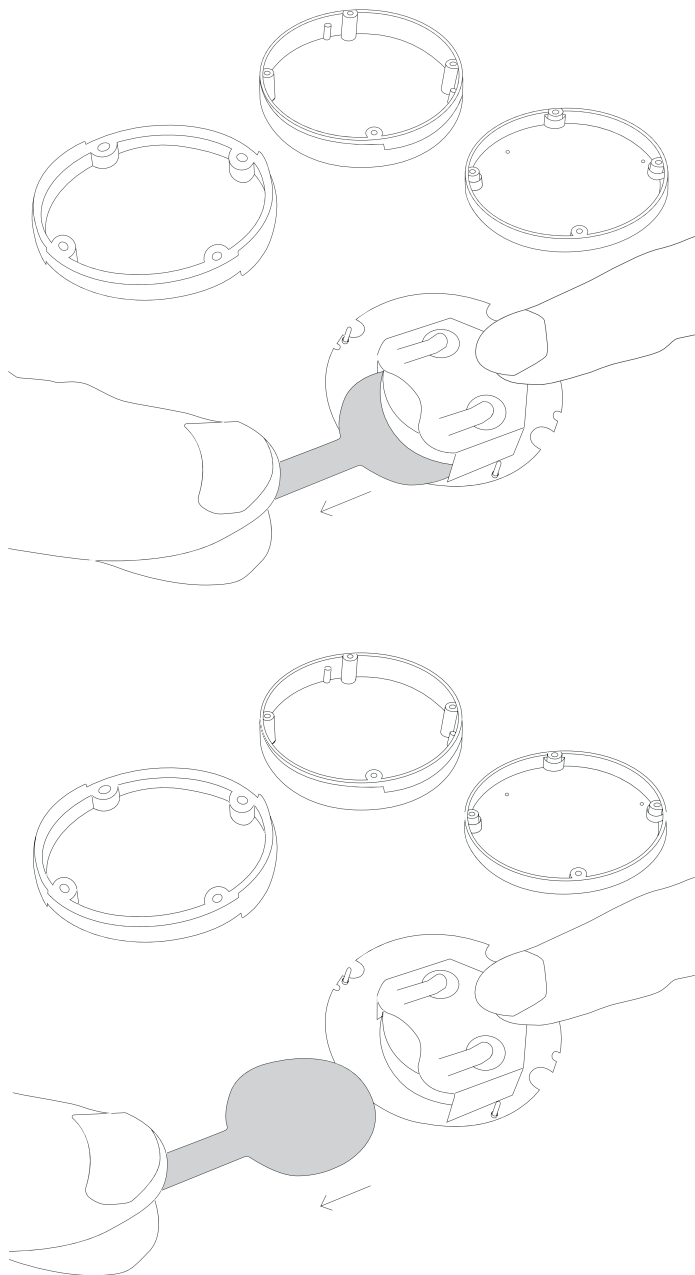
4. The device is on. Screw it back together.



1. Unscrew the device: remove 4 screws from the enclosure.  
Gently disassemble the device so as not to bend the flood probes.



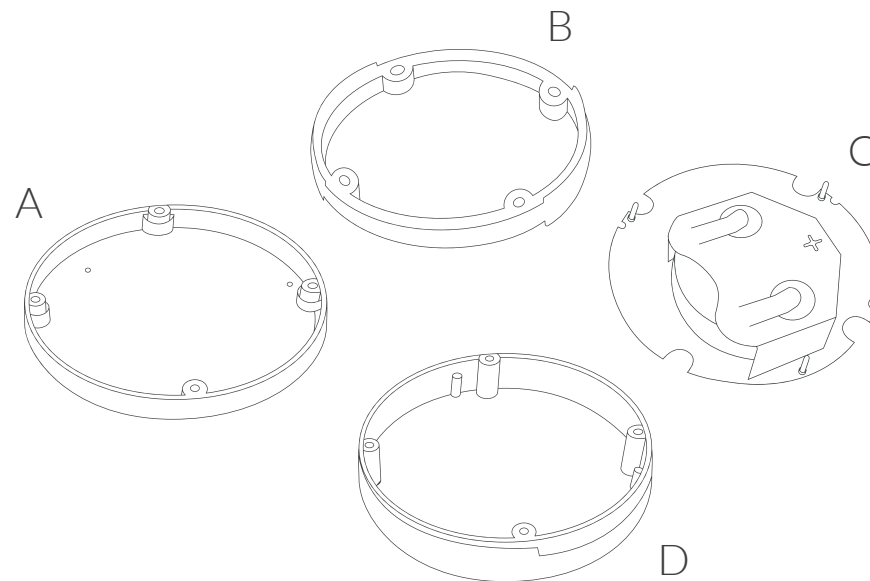
2. Hold the battery and pull out the green leaf.



3. Assemble the device. The order of the elements is important:

- Place the seal (B) at the bottom of the enclosure (A)
- Then insert the PCB (C)
- Fit the top part of the enclosure (D)

ⓘ **Important!** Before assembling the device, be sure to check the tips in the following pictures.



**Tip 1:** Adjust the flood probes as shown in the image below:

